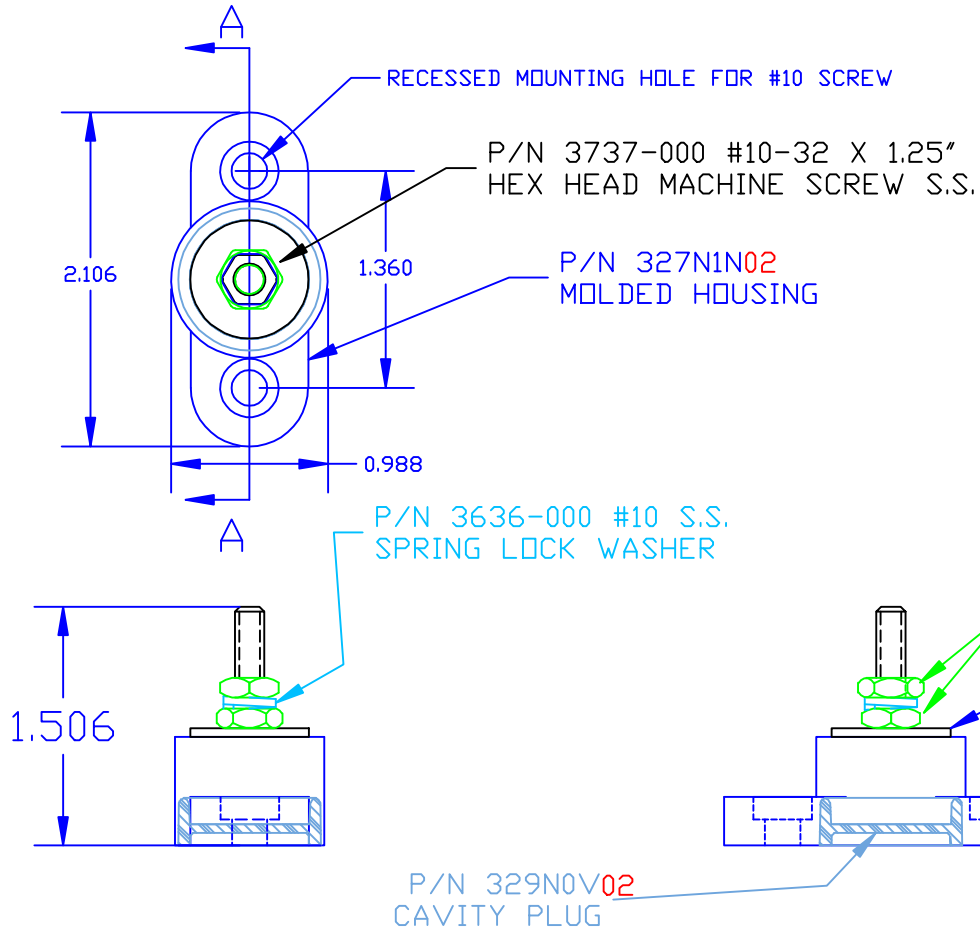


THE INFORMATION CONTAINED IN THIS DRAWING IS THE SOLE PROPERTY OF VTE INCORPORATED. ANY REPRODUCTION IN PART OR WHOLE WITHOUT THE WRITTEN PERMISSION OF VTE INCORPORATED IS PROHIBITED.

LTR.	REVISIONS	DATE
⤴	ADDED OPTIONAL CONSTRUCTION NOTE AND -00 SUFFIXES TO COMPONENT P/MS	04APR06



P/N 3841-001 #10-32 UNF HEAVY HEX JAM NUT STAINLESS STEEL. BOTTOM NUT FACTORY INSTALLED TO 15 IN./LBS.

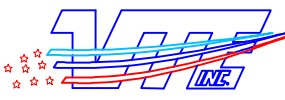
OPTIONAL CONSTRUCTION: P/N 3841-000 #10-32 UNF HEAVY HEX JAM NUT TIN-PLATED BRASS. BOTTOM NUT FACTORY INSTALLED TO 15 IN./LBS.

P/N 3643-000 #10 X .055" x .750" STAINLESS STEEL FLAT WASHER

DO NOT SCALE

TOLERANCE UNLESS OTHERWISE SPECIFIED: ±.030"/±0.8mm  
RADIAL DIAMETERS TO BE MEASURED OVER MANDRELS, RING GAGES OR PIN GAGES OF SUITABLE SIZE

BASE MATERIAL: GLASS-REINFORCED NYLON  
 BASE MATERIAL U.L. RATING: 94 HB  
 DIELECTRIC STRENGTH: 630 VOLTS/MIL PER ASTM D149  
 VOLTAGE RATING: 48 VDC MAX.  
 CURRENT RATING: 165 AMPS @ 12 VDC  
 TEMP. RISE AT LOAD: 52 DEG. F.  
 MAXIMUM RECOMMENDED TORQUE: 10 IN./LBS.

		<b>VTE Incorporated</b> 5437 Robinson Road, P.O. Box 790 Pellston, Michigan 49769 Telephone: 1-800-527-9256, 231-539-8000 FAX: 231-539-0914	
		REF: *****	DATE: 20NOV03
TITLE: POST TYPE JUNCTION BLOCK			SCALE:
MATERIAL:		PART NO.	
COLOR: RED	DRG CLASS: *****	77010 N02	