

THE INFORMATION CONTAINED IN THIS DRAWING IS THE SOLE PROPERTY OF VTE INCORPORATED. ANY REPRODUCTION IN PART OR WHOLE WITHOUT THE WRITTEN PERMISSION OF VTE INCORPORATED IS PROHIBITED.

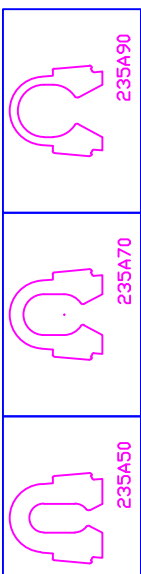
LTR.	REVISONS	DATE
A	ADD MIDDLE INTERIOR VIEW	05DEC08
B	REMOVED "P" MATERIAL	15MAY14

④

* MATERIAL IDENTIFIER
V=95 DUREMETER PVC Ⓢ

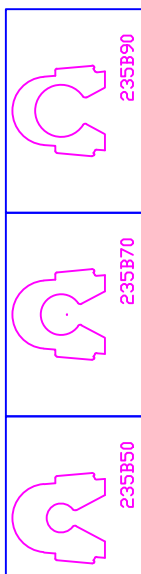
STYLE 'A' GRIP INSERTS

PART NUMBER	COLOR	CABLE C/L HEIGHT	CABLE Ø	MAX	STYLE 'A'30		STYLE 'A'50		STYLE 'A'70		STYLE 'A'90	
					MIN.	MAX.	MIN.	MAX.	MIN.	MAX.	MIN.	MAX.
735A30*02	RED	28"	1.00"	.47"	1.00"	.66"	1.00"	.85"	1.00"	1.00"	1.00"	1.00"
735A30*14	BLACK	7.1mm	25.4mm	19.1mm	25.4mm	16.8mm	25.4mm	21.6mm	25.4mm	21.6mm	25.4mm	25.4mm
735A50*02	RED			3.00"	7.6mm	5.00"	12.7mm	7.00"	17.8mm	9.00"	22.9mm	
735A50*14	BLACK			1.4"	35.6mm	1.4"	35.6mm	1.4"	35.6mm	1.4"	35.6mm	
735A70*02	RED											
735A70*14	BLACK											
735A90*02	RED											
735A90*14	BLACK											



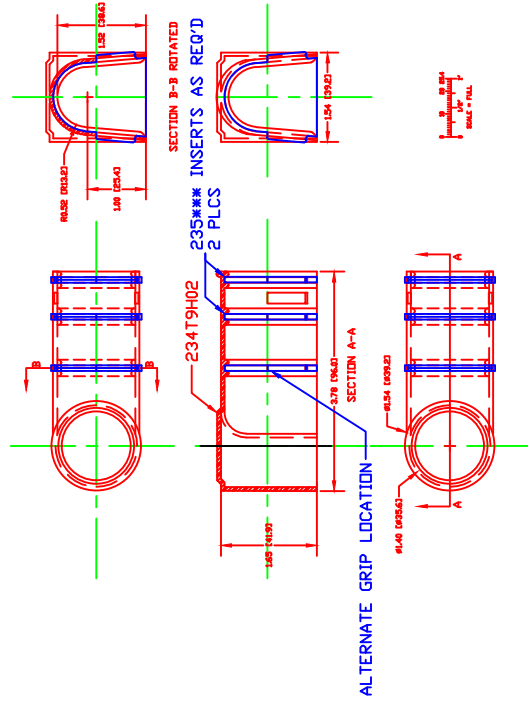
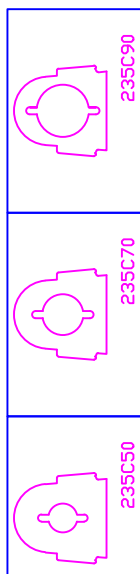
STYLE 'B' GRIP INSERTS

PART NUMBER	COLOR	CABLE C/L HEIGHT	CABLE Ø	MAX	TERMINAL Ø	STYLE 'B'30		STYLE 'B'50		STYLE 'B'70		STYLE 'B'90	
						FIXED	FIXED	FIXED	FIXED	FIXED	FIXED	FIXED	FIXED
735B30*02	RED			.75"	19.1mm	.75"	19.1mm	.75"	19.1mm	.75"	19.1mm	.75"	19.1mm
735B30*14	BLACK			.300"	7.6mm	.500"	12.7mm	.700"	17.8mm	.900"	22.9mm		
735B50*02	RED			1.4"	35.6mm	1.4"	35.6mm	1.4"	35.6mm	1.4"	35.6mm	1.4"	35.6mm
735B70*02	RED												
735B70*14	BLACK												
735B90*02	RED												
735B90*14	BLACK												



STYLE 'C' GRIP INSERTS

PART NUMBER	COLOR	CABLE C/L HEIGHT	CABLE Ø	MAX	TERMINAL Ø	STYLE 'C'30		STYLE 'C'50		STYLE 'C'70		STYLE 'C'90	
						FIXED	FIXED	FIXED	FIXED	FIXED	FIXED	FIXED	FIXED
735C30*02	RED			.75"	19.1mm	.75"	19.1mm	.75"	19.1mm	.75"	19.1mm	.75"	19.1mm
735C30*14	BLACK			.300"	7.6mm	.500"	12.7mm	.700"	17.8mm	.900"	22.9mm		
735C50*02	RED			.60"	15.2mm	.86"	21.8mm	1.1"	27.9mm	1.3"	31.7mm	1.3"	31.7mm
735C70*02	RED												
735C70*14	BLACK												
735C90*02	RED												
735C90*14	BLACK												



TOLERANCE UNLESS OTHERWISE SPECIFIED: ±.030"/±0.8mm
RADIAL DIAMETERS TO BE MEASURED OVER MANDRELS,
RING GAGES OR PIN GAGES OF SUITABLE SIZE

VTE Incorporated
5437 Robinson Road, P.O. Box 790
Pellston, Michigan 49769
Telephone: 1-800-527-9256, 231-539-8000
FAX: 231-539-0914

REF: 234T9*** & 235***	DATE: 00-00-98	DRN BY: BRH	WEIGHT: *****
TITLE: TUNNEL CAP INSULATOR		CHK'D BY: BRH	SCALE:
MATERIAL:		PART NO. 735 SERIES	
COLOR: CHARTED	DRG CLASS: *****		