

8 7 6 5 4 3 2 1

THE INFORMATION CONTAINED IN THIS DRAWING IS THE SOLE PROPERTY OF ANDERSON POWER PRODUCTS. ANY REPRODUCTION IN PART OR WHOLE WITHOUT THE WRITTEN PERMISSION OF ANDERSON POWER PRODUCTS IS PROHIBITED.

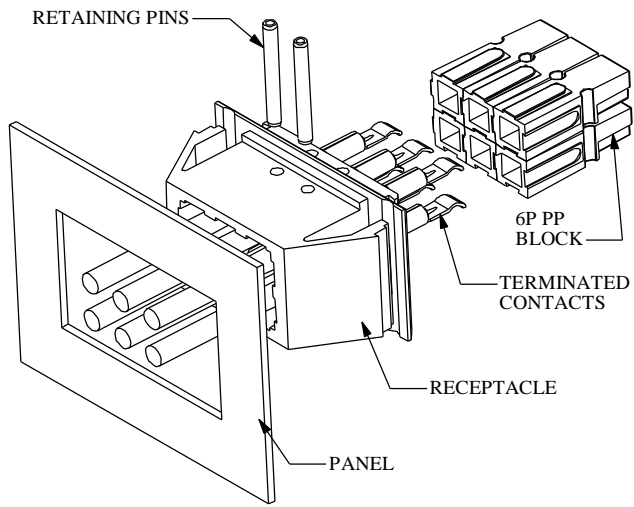
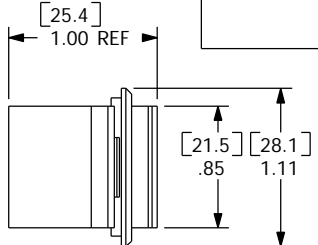
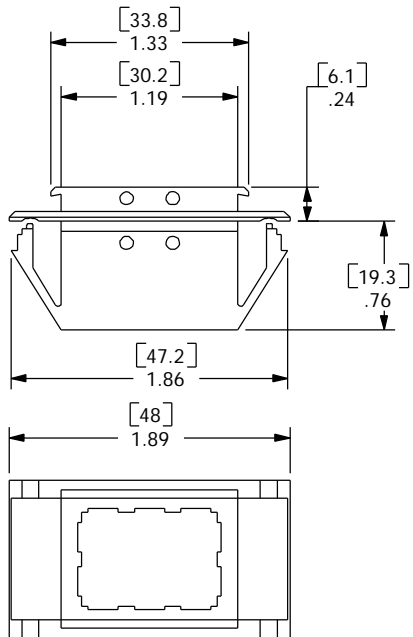
REV	DESCRIPTION OF CHANGES	BY:	DATE:

D

C

B

A



TYPICAL ASSEMBLY- REFER TO CATALOG FOR AVAILABLE CONFIGURATIONS

- NOTES:
- DESIGNED FOR PANELS .030- .134" (.76- 3.4mm) THICK
  - KNOCKOUT SIZE 1.00 X 1.62 (25.4 X 41.1)

ITEM NO.	PART OR IDENTIFYING NO.	NOMENCLATURE OR DESCRIPTION	MATERIAL SPECIFICATION	QTY RECD
COPYRIGHT 1999 ANDERSON POWER PRODUCTS. ALL RIGHTS RESERVED. UNAUTHORIZED REPRODUCTION HEREBY PROHIBITED.				
DIMENSIONS ARE IN INCHES DIMENSIONS IN PARENTHESES ( ) ARE IN MILLIMETERS		CAD GENERATED DRAWING. DO NOT MANUALLY UPDATE		ANDERSON POWER PRODUCTS
TOLERANCES ARE: 2PL- ±.02 [±.5]		APPROVALS DATE		
MATERIALS: <i>POLYCARBONATE</i>		DRAWN	CMS	8/6/99
FINISH <i>NONE</i>		CHECKED	DJD	8/9/99
NEXT ASSY USED ON		RESP ENG	UFN	8/24/99
APPLICATION		MFG ENG	CHB	8/23/99
DO NOT SCALE DRAWING		QUAL ENG	RO	8/24/99
SPECIFICATION: 114167S2			SIZE A	REV. 0
SCALE NONE			CADFILES/01095 SHEET 1 OF 1	