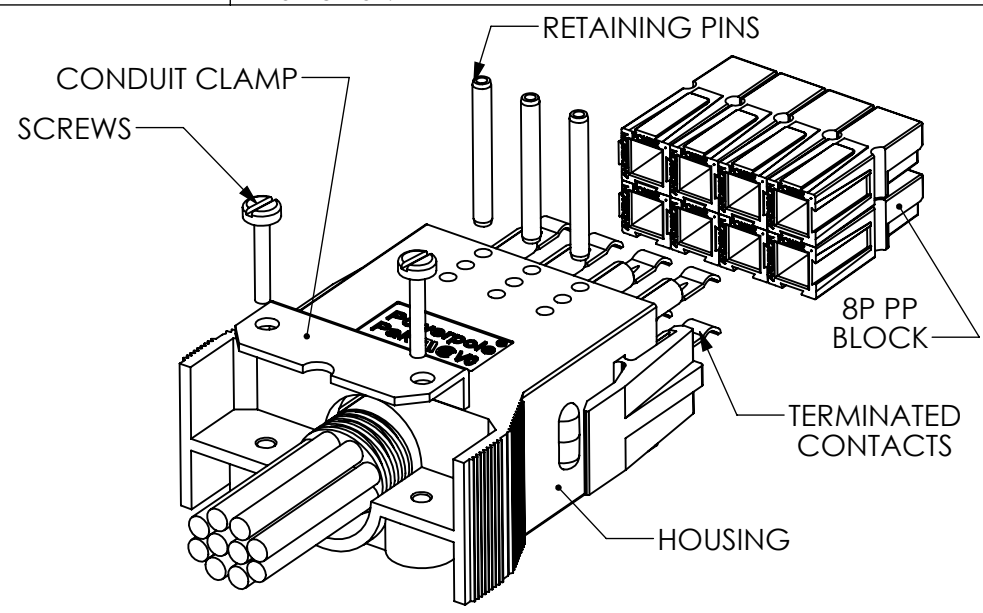
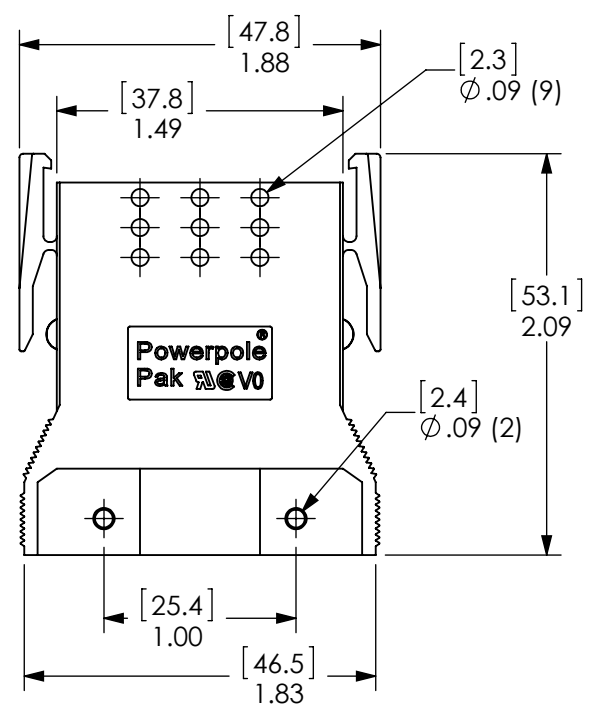


8 7 6 5 4 3 2 1

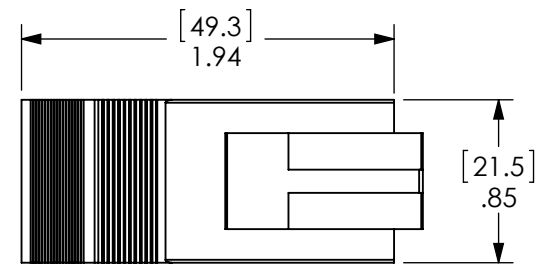
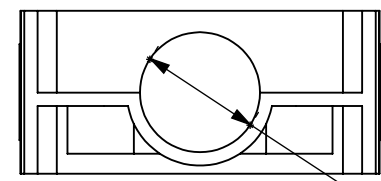
THE INFORMATION CONTAINED IN THIS DRAWING IS THE SOLE PROPERTY OF ANDERSON POWER PRODUCTS. ANY REPRODUCTION IN PART OR WHOLE WITHOUT THE WRITTEN PERMISSION OF ANDERSON POWER PRODUCTS IS PROHIBITED.

**Copyright 1999**

ANDERSON POWER PRODUCTS RESERVES THE RIGHT TO ALTER PRODUCT TYPES, THEIR TECHNICAL DATA, DIMENSION, STYLE AND ACCESSORIES WITHOUT PRIOR NOTIFICATION.



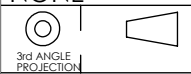
TYPICAL ASSEMBLY- REFER TO CATALOG FOR AVAILABLE CONFIGURATIONS



2	ECRN-15720 UPDATE DRAWING	TWE	9/23/2014
1	ECRN-13769 Ø .09 WAS Ø .08	DJD	12/16/04
REV.	DESCRIPTION	APPRV	DATE

REVISIONS

DIMENSIONS ARE IN:	INCH [MM]	<b>APPROVALS</b>		 <b>ANDERSON POWER PRODUCTS</b>		
UNLESS OTHERWISE STATED		DRAWN	8/2/1999			
TOLERANCES:		CHECKED	8/3/1999			
DECIMALS (INCH)	DECIMALS (MM)	MFG APPRV	8/3/1999			
.XX ± .02	.X ± .5	QC APPRV	9/9/1999	<b>TITLE</b> CATALOG NUMBER 1460G3 2X4 POWERPOLE PAK HOUSING PLUG WITH LATCH		
SURFACE FINISH:		ENG APPRV	8/3/1999			
MACHINED	128µin [3.2µ]	RO				
MOLDED	64µin [1.6µ]			SIZE	DWG NO.	REV.
MATERIAL:				A	114165S3	2
POLYCARBONATE				SCALE	CADFILE	SHEET
FINISH:				NONE	01090	1 OF 1
NONE				-CAD GENERATED DRAWING- DO NOT MANUALLY UPDATE DO NOT SCALE		



8 7 6 5 4 3 2 1