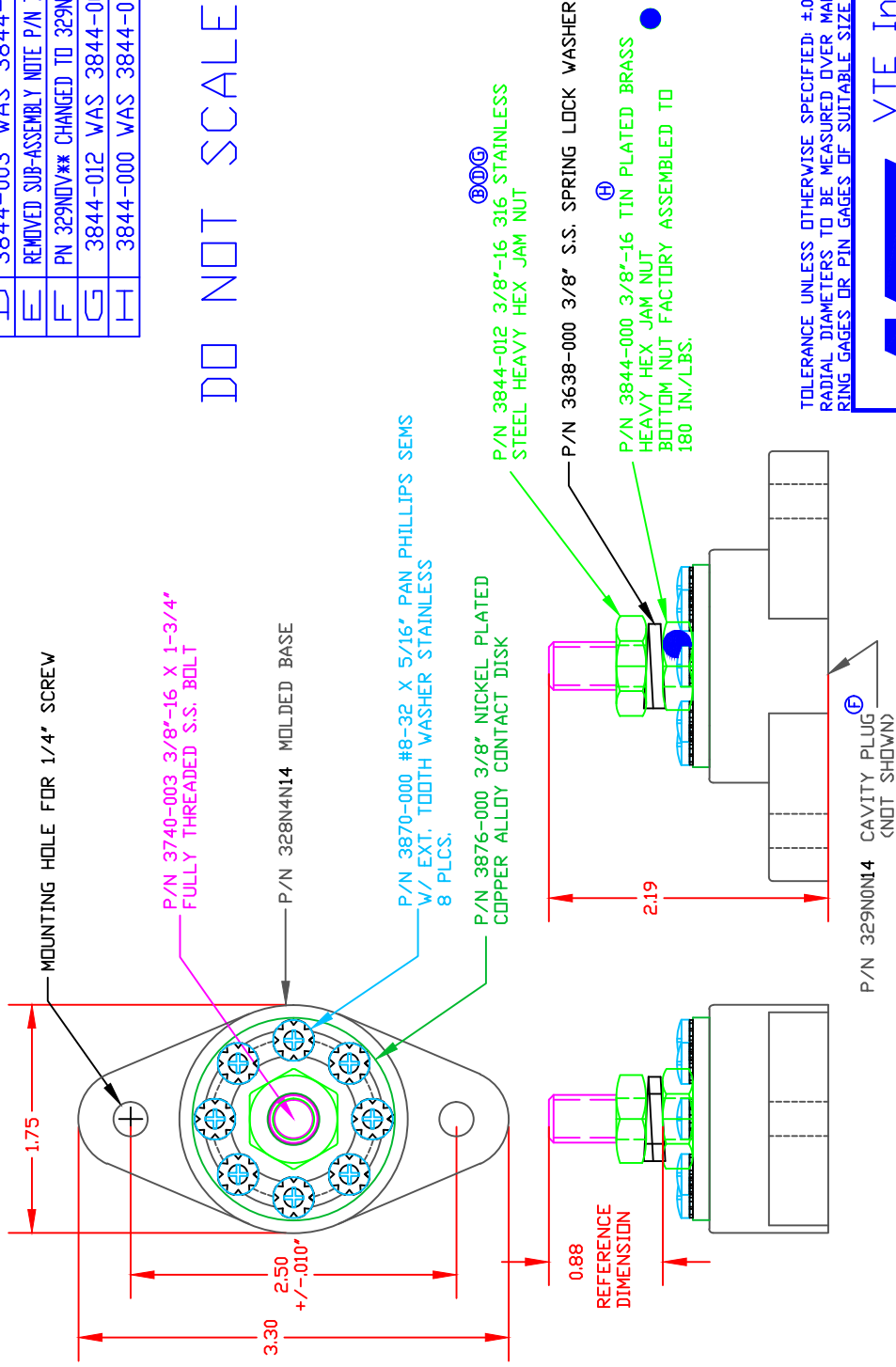


THE INFORMATION CONTAINED IN THIS DRAWING IS THE SOLE PROPERTY OF VTE INCORPORATED. ANY REPRODUCTION IN PART OR WHOLE WITHOUT THE WRITTEN PERMISSION OF VTE INCORPORATED IS PROHIBITED.

LTR.	REVISIONS	DATE	INT.
A	ADDED COMPONENT P/N SUFFIXES	04-04-06	BRH
B	3844-002 WAS 3844-000	10-10-06	BRH
C	ADDED SUB-ASSEMBLY P/N 73876	10-11-06	BRH
D	3844-003 WAS 3844-002	01-30-07	BRH
E	REMOVED SUB-ASSEMBLY NOTE P/N 73876	02-02-16	RAS
F	PN 329NDV** CHANGED TO 329NDN**	06-27-16	MDL
G	3844-012 WAS 3844-003	11-01-16	JMM
H	3844-000 WAS 3844-002	11-16-16	JMM

DO NOT SCALE



TOLERANCE UNLESS OTHERWISE SPECIFIED: ±.030"/±0.8mm
 RADIAL DIAMETERS TO BE MEASURED OVER MANDRELS,
 RING GAGES OR PIN GAGES OF SUITABLE SIZE

VTE Incorporated
 5437 Robinson Road, P.O. Box 790
 Pellston, Michigan 49769
 Telephone: 1-800-527-9256, 231-539-8000
 FAX: 231-539-0914

REF:	DATE:	DRN BY:	BRH	WEIGHT:
CUSTOMER DIMS	04-09-03	CHK'D BY:	BRH	
TITLE: 3/8" POWER DISTRIBUTION POST				SCALE:
MATERIAL:		PART NO.		
COLOR:	DRG CLASS	REV G	77837N14	

INCLUDES P-1680810001 BLUE DOT MULTI LABEL, 1 PER CONTAINER
 RECOMMENDED MAXIMUM TORQUE: 3/8-16 NUT 144 IN./LBS.,
 #8 SCREWS 15 IN./LBS.,
 160A @ 12VDC (8 X 20 AMP CIRCUITS)
 48 VOLTS DC MAX.
 52 F [27.9 C]
 GLASS-REINFORCED NYLON
 94 HB
 VTE MATERIAL P/N: 1111210514