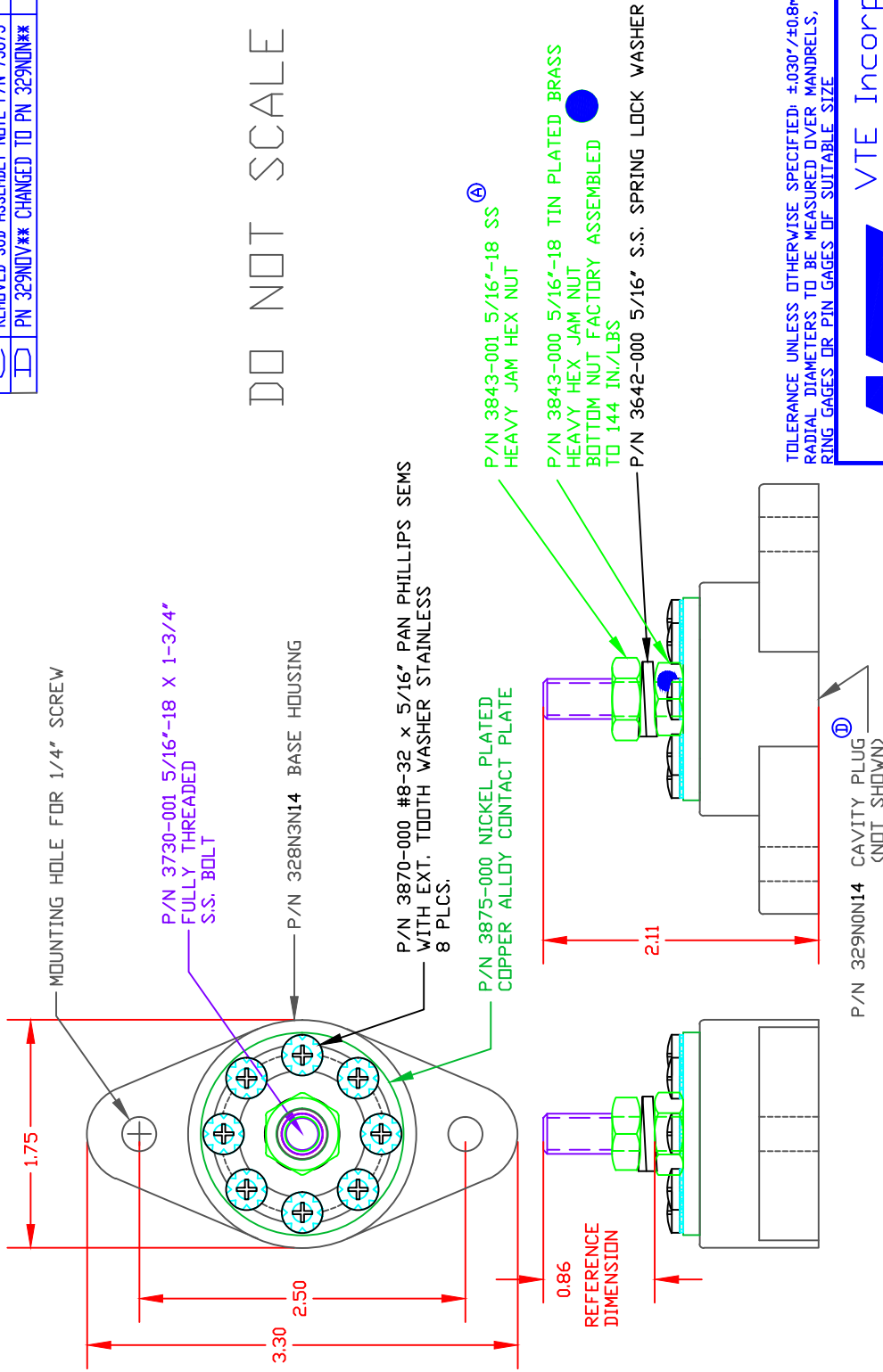


THE INFORMATION CONTAINED IN THIS DRAWING IS THE SOLE PROPERTY OF VTE INCORPORATED. ANY REPRODUCTION IN PART OR WHOLE WITHOUT THE WRITTEN PERMISSION OF VTE INCORPORATED IS PROHIBITED.

LIR.	REVISIONS	DATE	INT.
A	3843-001 WAS 3843-000	10-10-06	BRH
B	ADDED SUB-ASSEMBLY P/N 73875	10-11-06	BRH
C	REMOVED SUB-ASSEMBLY NOTE P/N 73875	02-02-16	RAS
D	PN 329NDV** CHANGED TO PN 329NDN**	06-27-16	MDL



DO NOT SCALE

INCLUDES P-16808110001 BLUE DOT MULTI LABEL, 1 PER CONTAINER  
 RECOMMENDED MAXIMUM TORQUE: 5/16-18 NUT 120 IN./LBS.  
 #8 SCREWS 15 IN./LBS.  
 160A @ 12VDC (8 X 20 AMP CIRCUITS)  
 48 VOLTS DC MAX.  
 52 F (27.9 C)  
 GLASS-REINFORCED NYLON  
 94 HB  
 VTE MATERIAL P/N: 1111210514

TOLERANCE UNLESS OTHERWISE SPECIFIED: ±.030"/±0.8mm  
 RADIAL DIAMETERS TO BE MEASURED OVER MANDRELS,  
 RING GAGES OR PIN GAGES OF SUITABLE SIZE

**VTE Incorporated**  
 5437 Robinson Road, P.O. Box 790  
 Pellston, Michigan 49769  
 Telephone: 1-800-527-9256, 231-539-8000  
 FAX: 231-539-0914

REF:	DATE:	DRN BY:	BRH	WEIGHT:
CUSTOMER DIMS	04-09-03	CHK'D BY:	BRH	
TITLE: 5/16" POWER DISTRIBUTION POST SCALE:				
MATERIAL:	PART NO.			
COLOR:	DRG CLASS	REV D	7783IN14	